

REPLAT WINDWARD AT JONATHAN'S LANDING

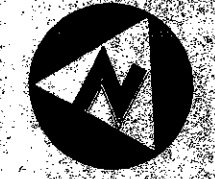
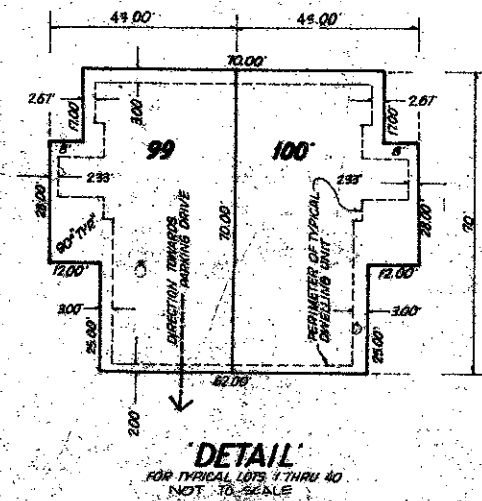
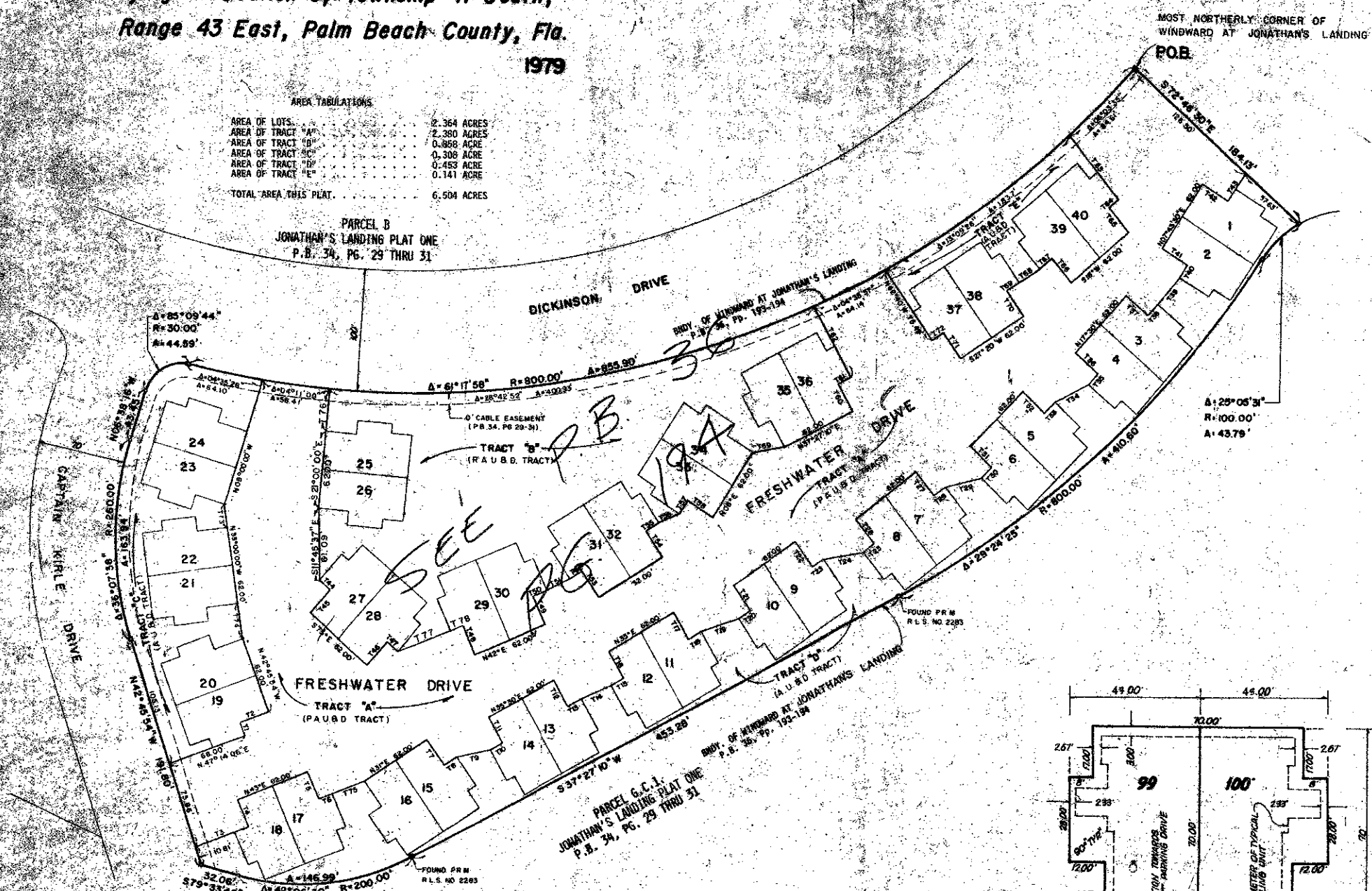
Being A Replat of Windward at Jonathan's Landing P.U.D., P.B. 36, Pp. 193-194 and Lying in Section 6, Township 41 South, Range 43 East, Palm Beach County, Fla.

1979

AREA TABULATIONS

AREA OF LOTS	2.364 ACRES
AREA OF TRACT "A"	2.380 ACRES
AREA OF TRACT "B"	0.868 ACRES
AREA OF TRACT "C"	0.308 ACRES
AREA OF TRACT "D"	0.493 ACRES
AREA OF TRACT "E"	0.141 ACRES
TOTAL AREA THIS PLAT	6.504 ACRES

PARCEL B
JONATHAN'S LANDING PLAT ONE
P.B. 34, PG. 29 THRU 31



101

THIS PLAT WAS FILED FOR RECORD AT THE COUNTY CLERK'S OFFICE, PALM BEACH COUNTY, FLORIDA, ON 11/15/79 BY JOHN R. BUNNELL, CLERK (RECORDS SECTION)

TABLE OF T-1 NUMBERS

T-1 NO.	BEARING	DIST.	T-1 NO.	BEARING	DIST.
T1	N 42°45'54" W	12.00'	T37	S 73°00'00" E	25.00'
T2	N 43°14'06" E	25.00'	T38	N 77°30'00" E	10.00'
T3	N 43°00'00" E	52.75'	T39	N 13°55'00" E	30.00'
T4	N 42°00'00" W	25.00'	T40	N 02°42'30" E	25.00'
T5	S 47°00'00" E	25.00'	T41	E 62°46'30" W	25.00'
T6	N 42°00'00" E	12.00'	T42	S 88°16'30" W	25.00'
T7	S 60°00'00" E	26.00'	T43	N 07°00'00" E	25.00'
T8	N 31°00'00" E	12.00'	T44	S 79°00'00" E	18.00'
T9	N 50°30'00" E	28.00'	T45	S 15°00'00" W	25.00'
T10	N 25°30'00" E	18.00'	T46	S 65°00'00" E	25.00'
T11	N 54°30'00" W	28.00'	T47	S 75°00'00" E	18.00'
T12	S 84°30'00" E	25.00'	T48	N 48°00'00" W	25.00'
T13	N 95°30'00" E	15.00'	T49	R 88°00'00" W	25.00'
T14	N 81°30'00" E	27.00'	T50	N 42°00'00" E	12.00'
T15	N 35°00'00" E	12.00'	T51	N 31°00'00" E	12.00'
T16	N 95°00'00" W	25.00'	T52	N 37°12'15" E	12.00'
T17	S 55°00'00" E	25.00'	T53	S 52°32'50" E	25.00'
T18	N 35°00'00" E	12.00'	T54	N 52°32'50" W	25.00'
T19	S 46°08'32" W	29.72'	T55	N 38°12'15" E	12.00'
T20	S 37°27'10" W	12.00'	T56	N 29°40'00" E	25.00'
T21	S 52°32'50" E	25.00'	T57	N 05°00'00" E	12.00'
T22	N 52°32'50" W	25.00'	T58	S 84°00'00" E	25.00'
T23	S 37°27'10" W	12.00'	T59	N 67°25'00" E	25.00'
T24	S 37°41'29" W	28.74'	T60	N 52°32'50" W	25.00'
T25	S 35°13'10" W	12.00'	T61	N 37°52'10" E	12.00'
T26	S 54°42'50" E	25.00'	T62	N 52°32'50" W	25.00'
T27	N 58°42'50" W	25.00'	T63	S 72°00'00" E	56.00'
T28	S 35°17'10" W	12.00'	T64	S 14°00'00" W	12.00'
T29	S 30°26'64" W	31.66'	T65	N 72°00'00" W	25.00'
T30	S 46°17'10" W	12.00'	T66	N 72°00'00" W	25.00'
T31	S 63°42'50" E	25.00'	T67	S 38°30'00" W	12.00'
T32	N 63°42'50" W	25.00'	T68	S 54°23'15" W	25.00'
T33	S 26°17'10" W	12.00'	T69	S 01°00'00" E	12.00'
T34	S 23°22'13" W	31.14'	T70	S 01°00'00" E	12.00'
T35	N 17°30'00" E	12.00'	T71	N 01°00'00" E	12.00'
T36	N 72°30'00" W	25.00'	T72	S 26°48'52" E	39.00'
T37	S 26°48'52" E	39.00'	T73	N 43°14'06" E	25.00'
T38	S 40°52'37" N	46.79'	T74	N 43°14'06" E	25.00'
T39	S 40°52'37" N	46.79'	T75	N 43°14'06" E	25.00'

0261-309

Windward at Jonathan's Landing

CONRAD SCHAEFER CONSULTING ENGINEERS
P.O. BOX 1000
PALM BEACH, FLORIDA 33480
TELEPHONE (407) 851-1111
FAX (407) 851-1112

BENCHMARK

THIS INSTRUMENT WAS PREPARED BY ROBERT J. BRIDGES IN THE OFFICES OF BENCH MARK AND SURVEYING AND MAPPING, INC., 2300 PALM BEACH BLVD., SUITE 200, WEST PALM BEACH, FLORIDA 33411.